

Management of Children (under 16yrs) under the Influence of Alcohol/Drugs

If you suspect Deliberate Self Harm please use flow chart overleaf.

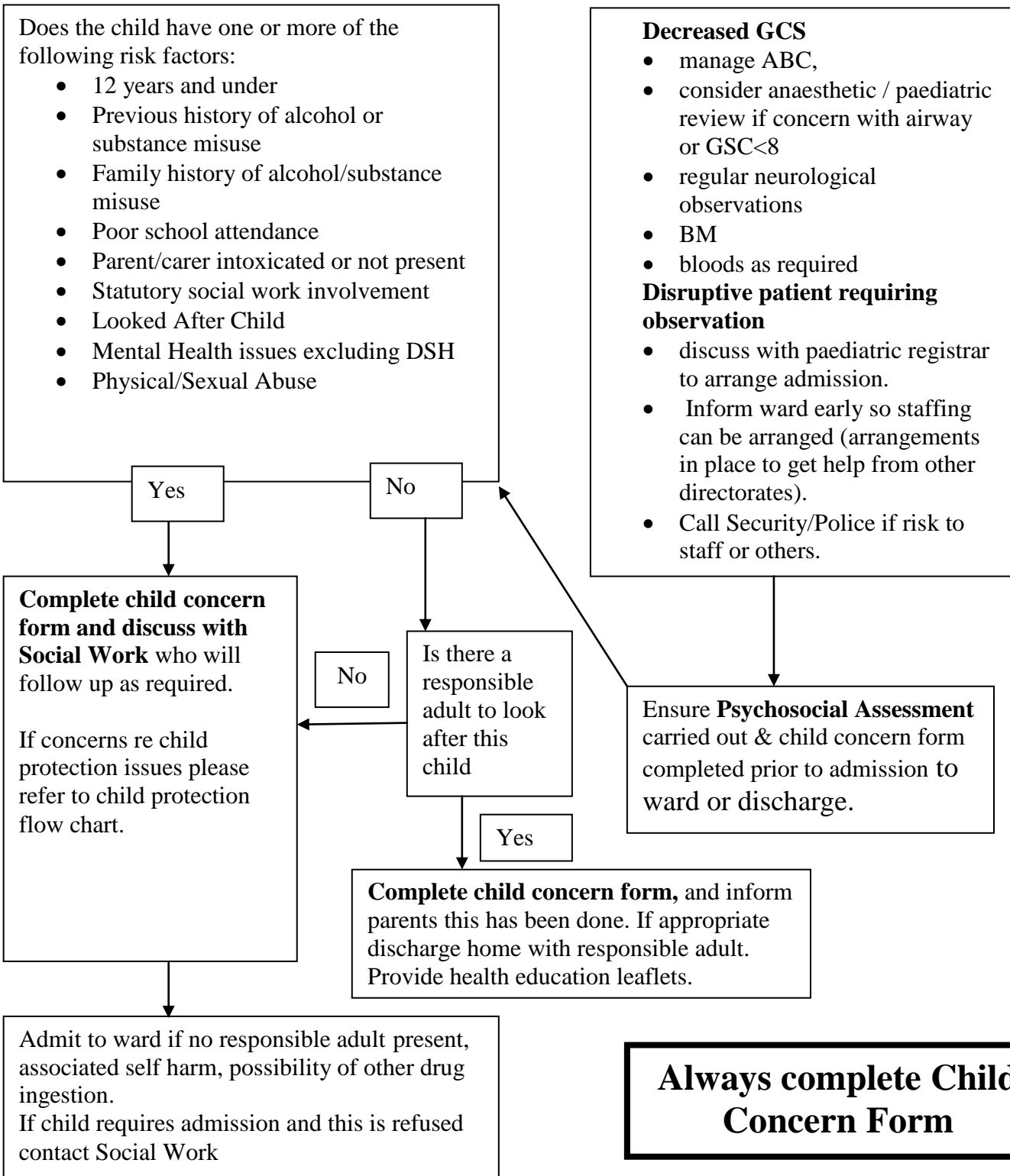
Triage, assess medical needs

No Medical Concerns

Reduced GCS or risk of injury

Psychosocial Assessment

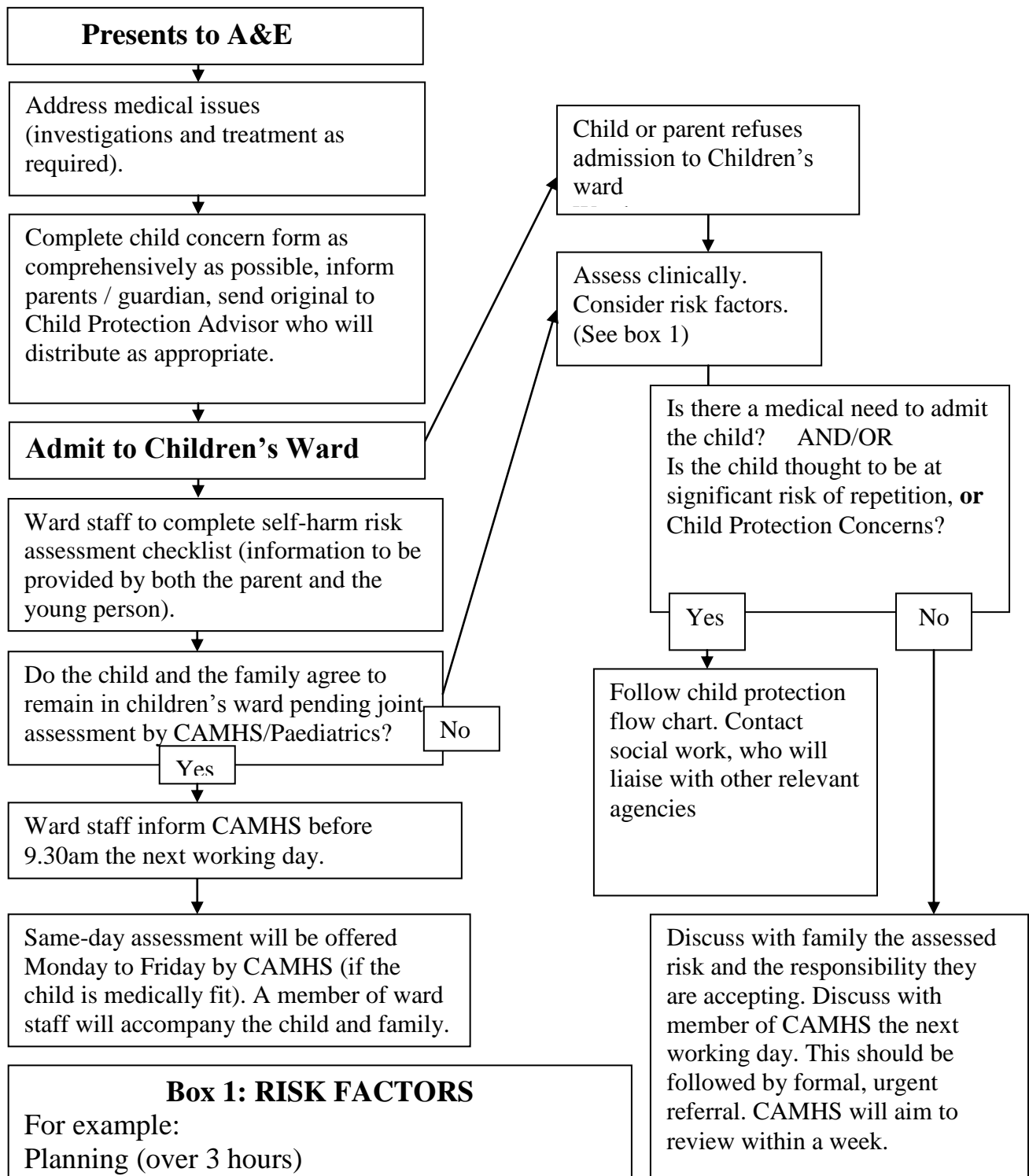
Medical Management



**Management of Children (under 16 years of age)
Presenting with Deliberate Self-Harm / Self-Poisoning
(or Intoxication if self-destructive intention suspected)**



Alcohol intoxication: if no suspicion of DSH see flow chart overleaf.



Box 1: RISK FACTORS
For example:
Planning (over 3 hours)
No one present, or discovery unlikely
Suicide note
Continuing intent and/or hopelessness
Hostile or neglecting response from parents/carers

Discuss with family the assessed risk and the responsibility they are accepting. Discuss with member of CAMHS the next working day. This should be followed by formal, urgent referral. CAMHS will aim to review within a week.

CONTACTS
CAMHS Phoenix Centre
01463705473/705597
Duty Social Work: 0900-1700 - 01463 701376 or 7576
17.00-0900hrs- via Switchboard.

For further information and guidance please refer to DSH guidelines, self harm risk assessment and child protection guidelines collocated with